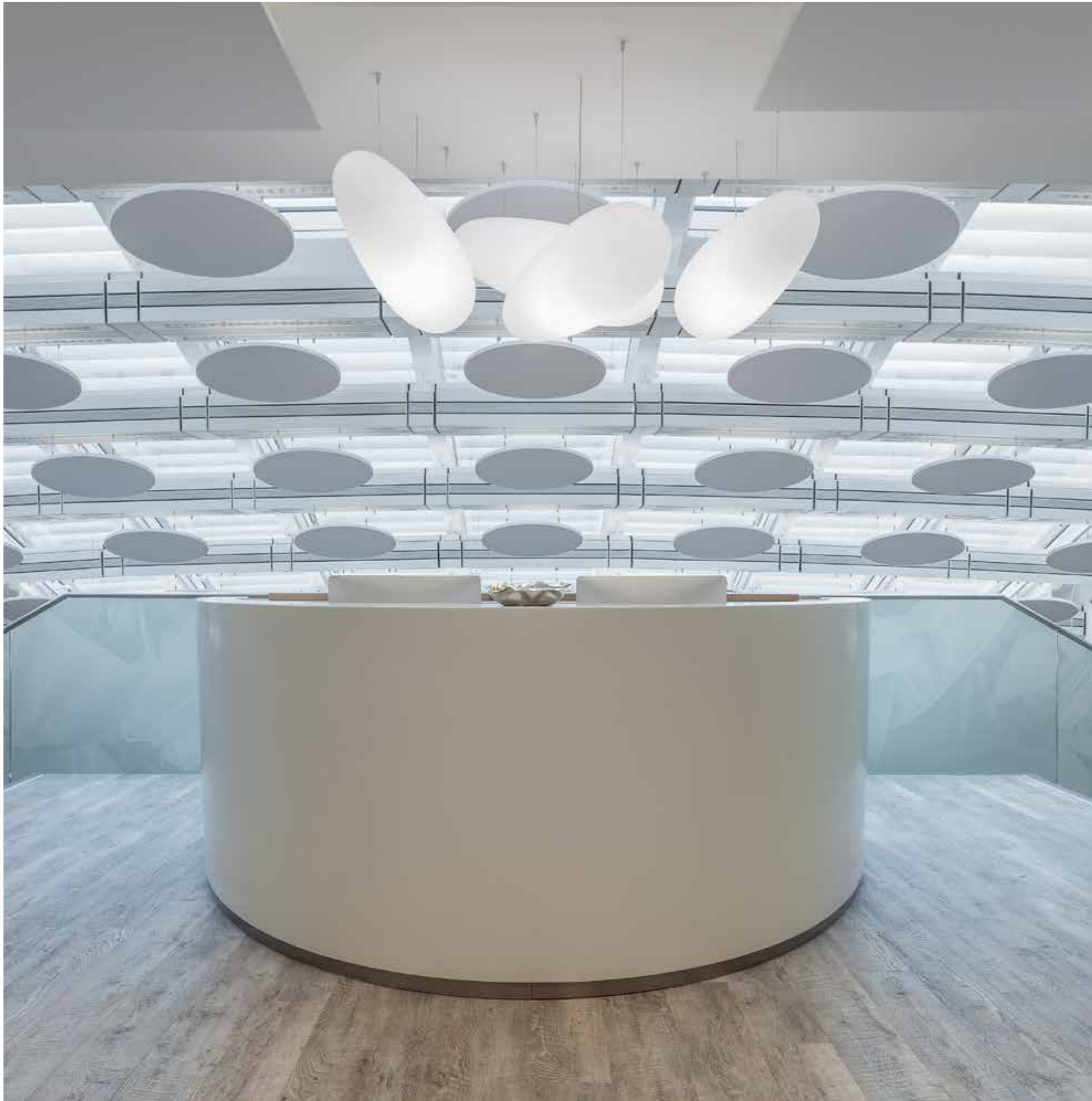




## Acoustic Colours

● 3D tiles S-5.32 in Avocado, Porcelain, Blush and Civic

● The White Room, New Zealand



# Leaders in Acoustics

We're specialists in acoustic products that enhance wellbeing and comfort, whilst improving learning outcomes and productivity by reducing reverberated noise and echo.

Made in Australia and New Zealand, our acoustic products and global operations are proudly 100% carbon neutral in everything we do.

It's what the future sounds like.  
And, now it looks fabulous too.

# Autex Colour Selector



● Acros\*



● Falling Water\*



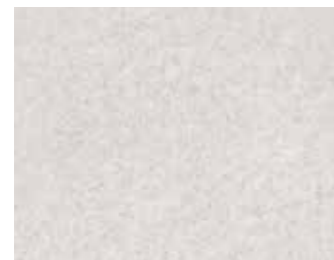
● Myst



● Porcelain



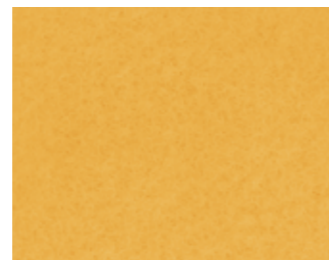
● Stonewash



● Savoie\*



● Beehive\*



● Senado\*



● Sage



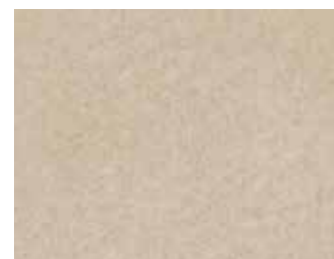
● Atlantis



● Calypso



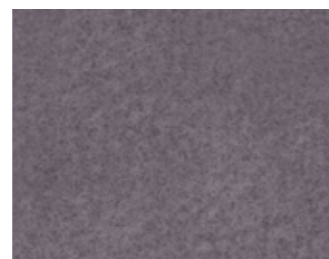
● Electric Blue



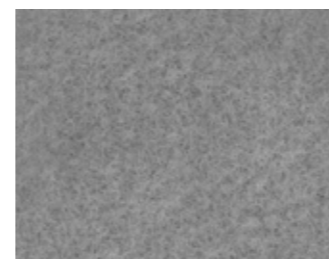
● Opera\*



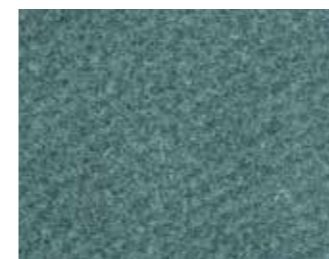
● Parthenon\*



● Cavalier\*



● Flatiron\*



● Spearmint



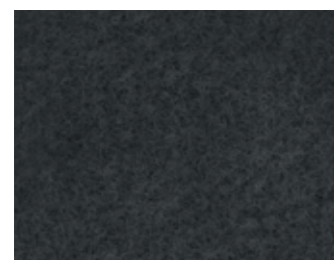
● Lime



● Jade



● Granny Smith



● Empire\*



● Gherkin\*



● Petronas\*



● Tree House\*



● Simba



● Chilli Red



● Vintage



● Blazing Red



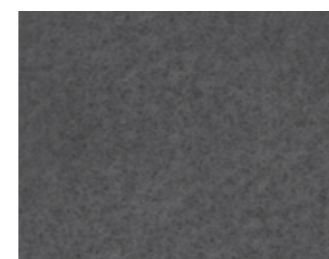
● Sargazo\*



● Pinnacle\*



● Muralla\*



● Herald\*



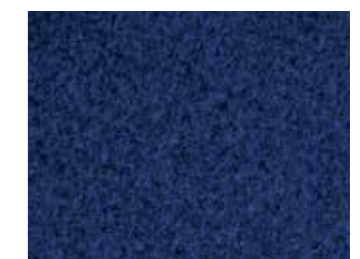
● Koala



● Bark



● Octane



● Ink

- 36 colours in smooth or velour finish for Vertiface® & Quietspace® Panel.
- Composition™ - velour finish
- Symphony® - smooth finish



● Acros\*

Cube™



● Falling Water\*

Cube™

- 21 colours for:  
Cube™ wall and ceiling panels,  
Horizon™, Frontier™, Groove and Vicinity™

- 17 \*crossover colours  
that co-ordinate with Vertiface®



● Savoie\*

Cube™



● Beehive\*

Cube™



● Senado\*

Cube™



● Opera\*

Cube™



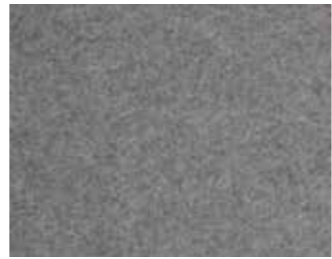
● Parthenon\*

Cube™



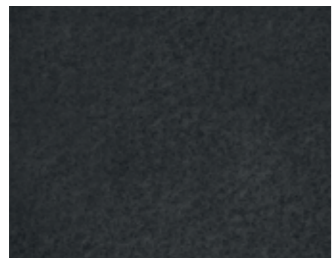
● Cavalier\*

Cube™



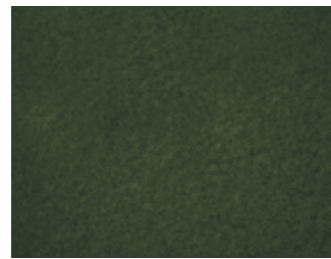
● Flatiron\*

Cube™



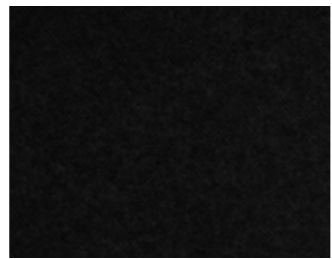
● Empire\*

Cube™



● Gherkin\*

Cube™



● Petronas\*

Cube™



● Tree House\*

Cube™



● Sargazo\*

Cube™



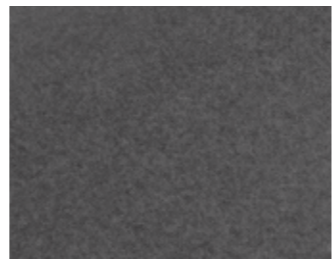
● Pinnacle\*

Cube™



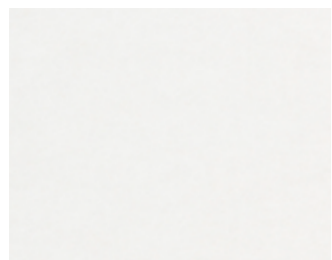
● Muralla\*

Cube™



● Herald\*

Cube™



● Pavilion

Cube™



● Rosada

Cube™



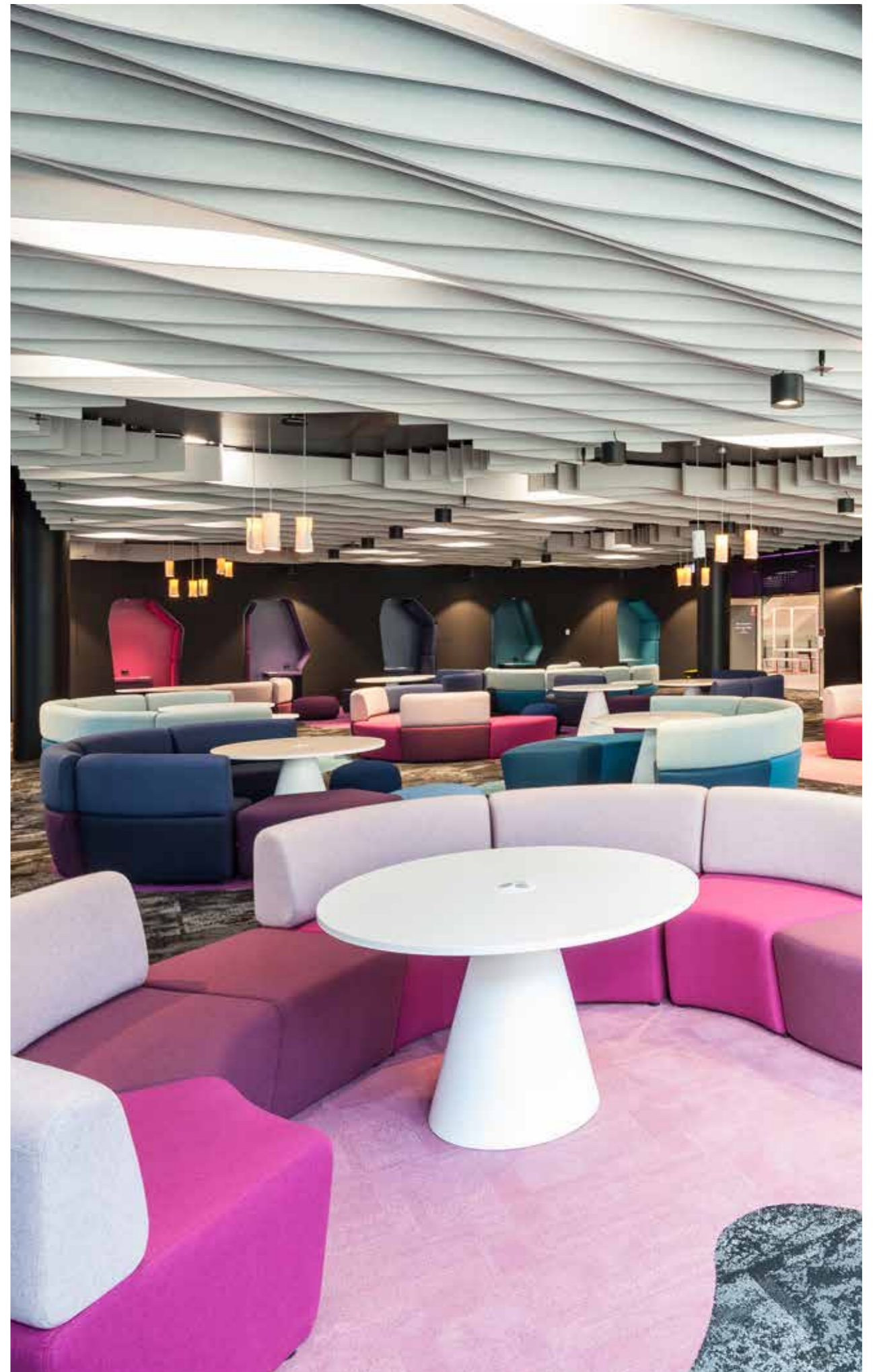
● Zenith

Cube™



● Ironbank

Cube™



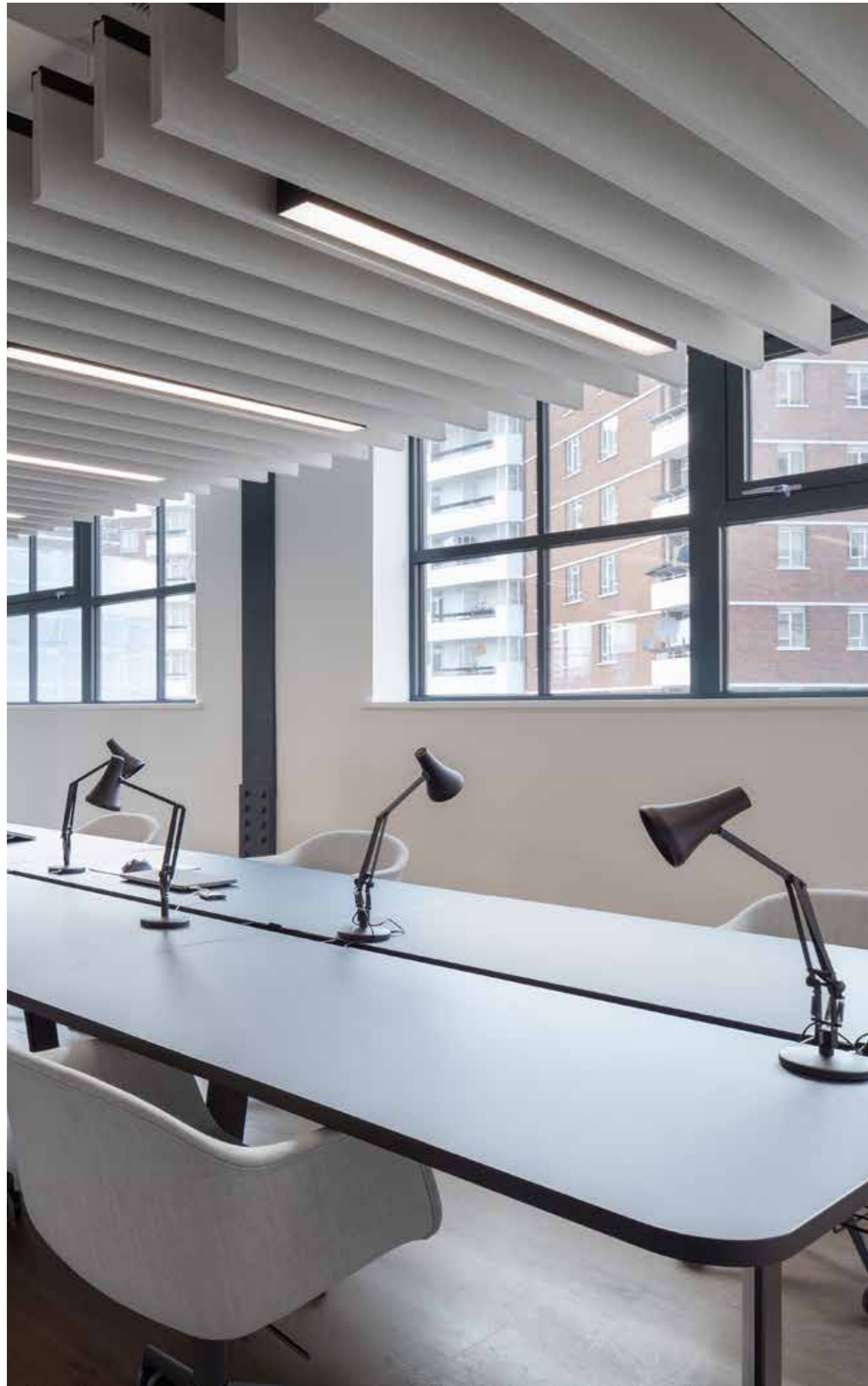
All our acoustic products and global operations are carbon neutral. Because there's nothing more beautiful than the future.

In everything we do



● Made in Australia and New Zealand

● Project: Autex London showroom  
Product: Frontier™ 24mm fins in Savoye - Style Tundra  
Architects: Tp Bennett  
Location: London, UK



## Cube™ and Vertiface®

● 17 \*crossover colours for walls and ceilings



# Autex Acoustics® Colour Collection

## Vertiface® Wall Coverings



### Finish options

- Velour**
- Velcro receptive
  - Pinnable, self-healing
- Smooth**
- Pinnable, self-healing

### Colours

- 36 colours**
- Co-ordinates with 17 Cube™
  - \*Crossover colours

### Sizes

- Thickness**
- 3-4mm

### NRC

n/a

### Description

- Roll**
- 100% PET
  - Min. 80% recycled
  - Moisture, mould
  - Impact resistant

### Install

- Education
- Hospitality
- Office
- Medical
- Retail
- Aged Care
- Health Care
- Government
- Public Spaces
- Museums
- Galleries
- Housing
- Sports Facilities
- Aquatic Centres
- Fitness Centres
- Creative Spaces

### About

Durable and decorative, Vertiface® can be used as a furnishing fabric wall and panel lining or overlay.

## Quietspace® Walls and Ceilings



### Nude

- Safe to touch
- Impact resistant

### Velour

- Velcro receptive
- Pinnable, self-healing

### Smooth

- Pinnable, self-healing

### 3 base colours

- Nude White
- Nude Grey
- Nude Black

+

### 36 colours

### Thickness

- 25mm
- 50mm
- 75mm
- 100mm

### NRC

- 0.85
- 1.00
- 1.00
- 1.00

### Roll and Panel

- 100% PET
- Min. 45% recycled
- Moisture, mould
- Impact resistant

## Composition® Walls



### Velour

- Velcro receptive
- Pinnable, self-healing

### 36 colours

- White core

### Thickness

- 10-12mm

### NRC

- 0.40

### Roll

- 100% PET
- Min. 60% recycled
- Moisture, mould
- Impact resistant

Composition® is a high performing impact resistant acoustic wall covering and a great alternative to paint or wallpaper.

## Symphony® Walls



### Smooth

- Pinnable, self-healing

### 36 colours

- Black core

### Thickness

- 10-12mm

### NRC

- 0.40

### Roll and Panel

- 100% PET
- Min. 60% recycled
- Moisture, mould
- Impact resistant

The installation options for all Autex Acoustic® products are limitless

Symphony® is a high performing impact resistant acoustic wall covering and a great alternative to paint or wallpaper.

## Cube™ Walls, Ceilings and Panels



### Smooth

- Pinnable

### 21 colours

- Solid core
- Co-ordinates with 17 Vertiface®
- \*Crossover colours

### Thickness

- 12mm
- 24mm

### NRC

- 0.45-0.70 +
- 0.70-0.80 +

### Panel

- 100% PET
- Min. 60% recycled
- Moisture, mould
- Impact resistant
- Cut and print options
- Groove options

Lightweight with high impact resistance, Cube™ is a semi-rigid, solid-core acoustic panel. Cube™ can be used on walls, ceilings, decorative panels, and used for highly noise reducing fins and baffles in vertical ceiling systems.



# Bespoke Acoustics Solutions

Autex Acoustics® offers custom design capabilities that are limited only by your imagination. Solid core Cube™ will cut to any shape and configuration, whilst Composition® and Symphony® can be edged to create tactile, intricate designs.

The choice is yours.

Autex Acoustics® also offers Acoustic Timber™, print, pattern and solid colour print to further extend your design possibilities. Find what you've been looking for at [www.autexacoustics.com.au](http://www.autexacoustics.com.au)





**Autex  
Acoustics®**

● **Australia**

VIC, TAS, SA  
285 Swan St  
Richmond  
VIC 3121  
Phone 03 9450 6700  
Freephone 1800 678 160

NSW, ACT  
Unit 2, 10 Hill Rd  
Lidcombe  
NSW 2141  
Phone 02 9729 6100

QLD, NT  
68 Business St  
Yatala  
QLD 4207  
Phone 07 3001 3000

WA  
Unit 1, 398C Victoria Rd  
Malaga  
WA 6090  
Phone 08 9355 1911

Customer Service 1800 678 160 [www.autexacoustics.com.au](http://www.autexacoustics.com.au)

● **New Zealand**

Autex Industries Ltd  
702-718 Rosebank Rd  
Private Bag 19988  
Avondale 1746, Auckland  
Phone +64 800 428 839  
Freephone +64 9 828 5810

● **United Kingdom**

Autex Acoustics Ltd  
Unit J4, Lowfields Way  
Lowfields Business Park  
Elland, West Yorkshire  
HX5 9DA  
Phone +44 142 241 8899

● **United States**

Autex Acoustics LLC  
1630 Dan Kipper Dr  
Riverside CA 92507  
Phone +1 424 203 1813

Autex Acoustics® products are carbon neutral and contribute to WELL, LEED, Green Star & BREEAM certification. Contact your Autex Acoustics® specification manager to hear how we can support your low carbon goals.



Autex is an ISO certified organisation encompassing Quality (ISO 9001), Environmental (ISO 14001), & Health and Safety (ISO 45001). Brand names and logos are registered or unregistered trademarks owned or used under license by Autex Industries Limited. Swatches featured are representative of the final product colours as close as the printing process allows. Please refer to actual samples prior to ordering. This brochure uses low environmental impact FSC certified pulps, manufactured in a facility that is chlorine free and ISO 14001 Environmental Management System accredited. Emissions have been offset and this brochure is fully recyclable and carbon neutral. © Copyright 2022 Autex Industries Ltd. All Rights Reserved.